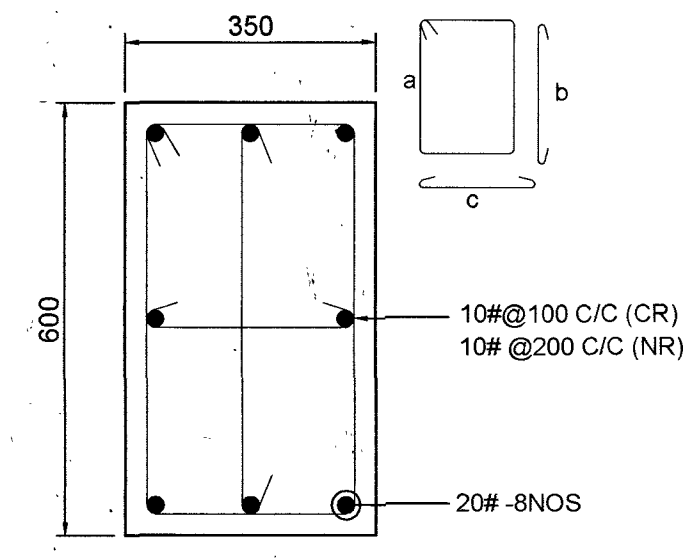
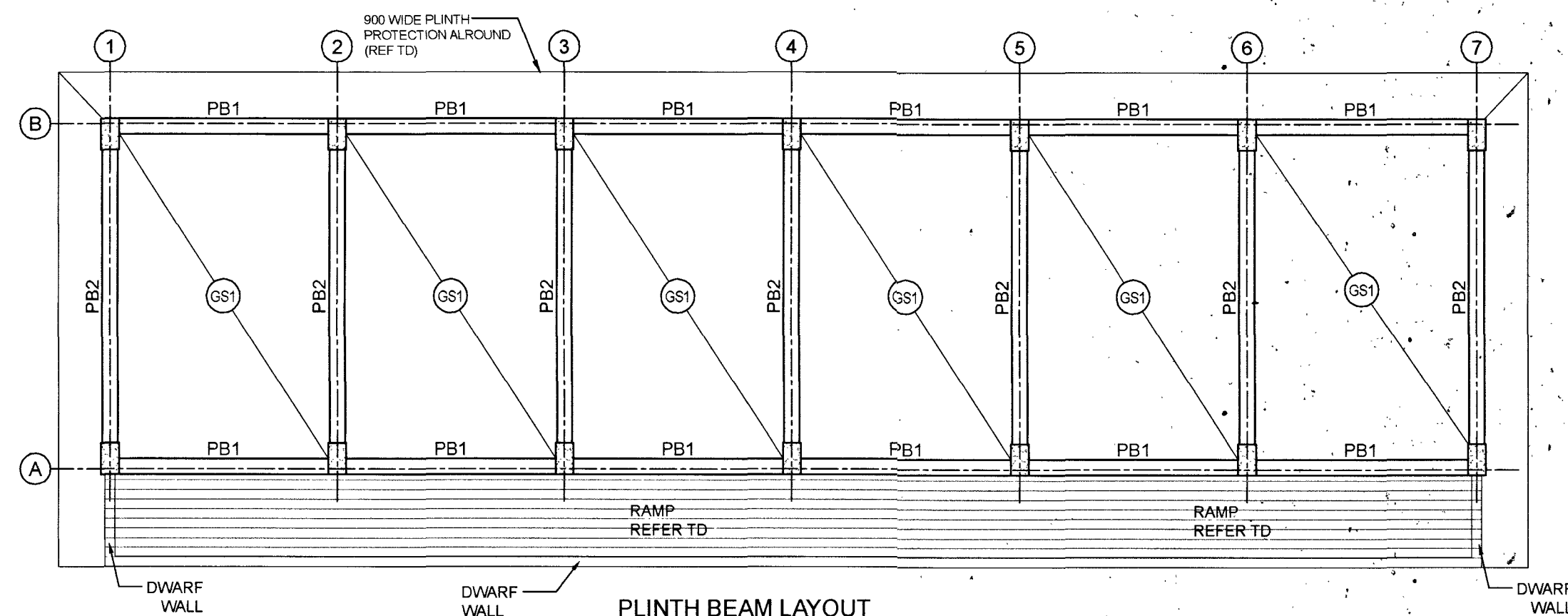


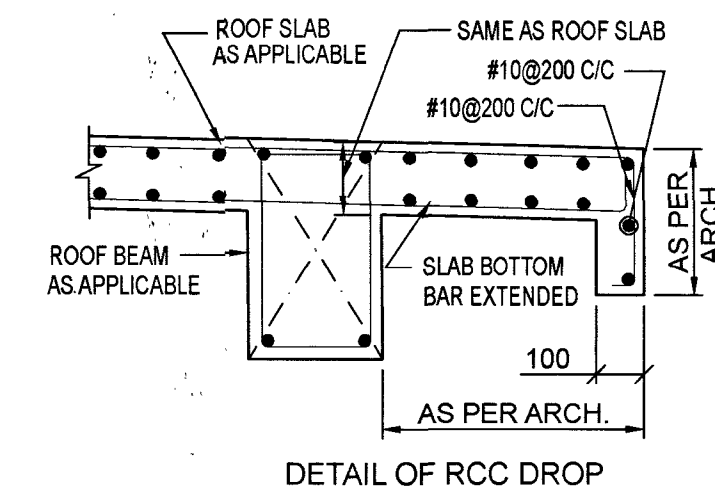
COLUMN LAYOUT



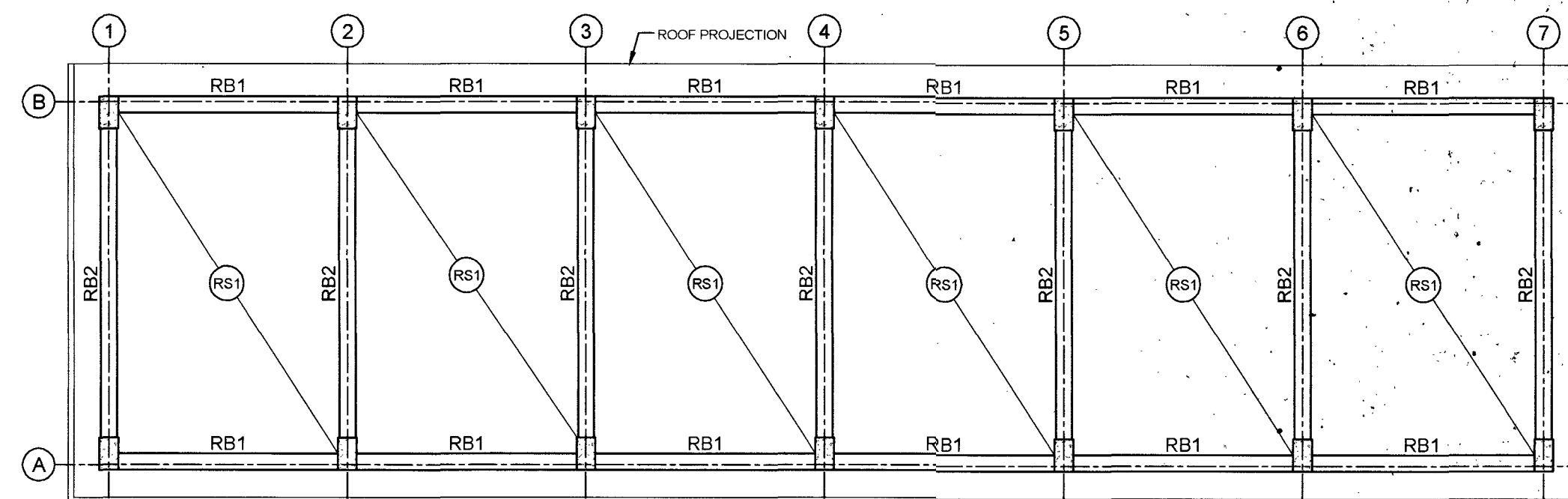
COLUMN (C1)



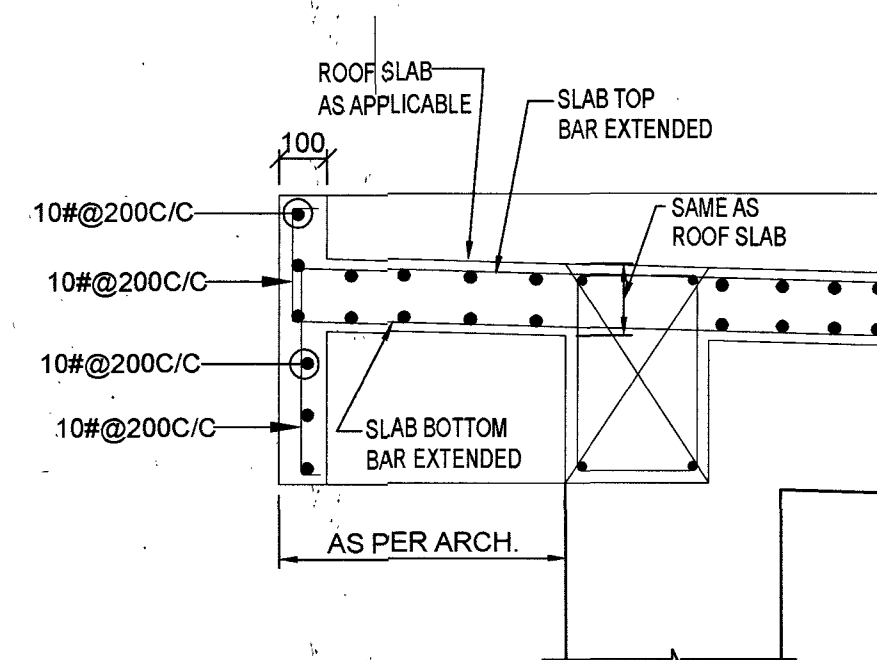
PLINTH BEAM LAYOUT



DETAIL OF RCC DROP



ROOF BEAM LAYOUT



DETAIL OF RCC PARAPET WITH FIN

- NOTES**
1. ALL DIMENSIONS AND LEVELS GIVEN ARE IN MILLIMETERS UNLESS OTHERWISE SPECIFIED.
 2. FIGURED DIMENSIONS ONLY SHALL BE FOLLOWED.

DATE	DESCRIPTION	SIGN
REVISIONS		

VETTED BY
ALL DETAILS HAVE BEEN THOROUGHLY CHECKED AND ARE IN COMPLIANCE TO STANDARDS, CODES, REGULATIONS IN RESPECT OF SAFETY, SOUNDNESS AND ECONOMY.

PROVN OF HANGAR AND ANNEXE BUILDING AT INS DEGA VISAKHAPATNAM

CAR PARKING

COLUMN LAYOUT, PLINTH AND ROOF BEAM LAYOUT

SHT NO.	S02	HELIOS ENGINEERING CONSULTANTS #38-34-66 FCI COLONY MARRIPALEM VISAKHAPATNAM - 530018
PRO NO.	2204/3	
SCALE.	AS NOTED	
DRN BY.	KSS	
DATE.	23-02-2023	

DESIGNED BY DV TRINADH RAO	CHECKED BY S SURYA MS (STRUCTURES)
-----------------------------------	---

**CHIEF ENGINEER (NAVY)
VISAKHAPATNAM**

REF.DRG.NO : CEVZ/2022WD-2120(S)(CP) Sht.No: 2/3

DESIGNS & DRAWINGS PREPARED UNDER CONSULTANCY FROM M/S HELIOS ENGINEERING CONSULTANTS AND VETTED BY ANDHRA UNIVERSITY

Keshi Ramana
Lt. Col
ISO 1 (Design)
Chief Engineer

Srinivas Nalla, Iose
CE (NF)
Director (Design)
for Chief Engineer